



# BINTI SHUJAA

*Project Report*

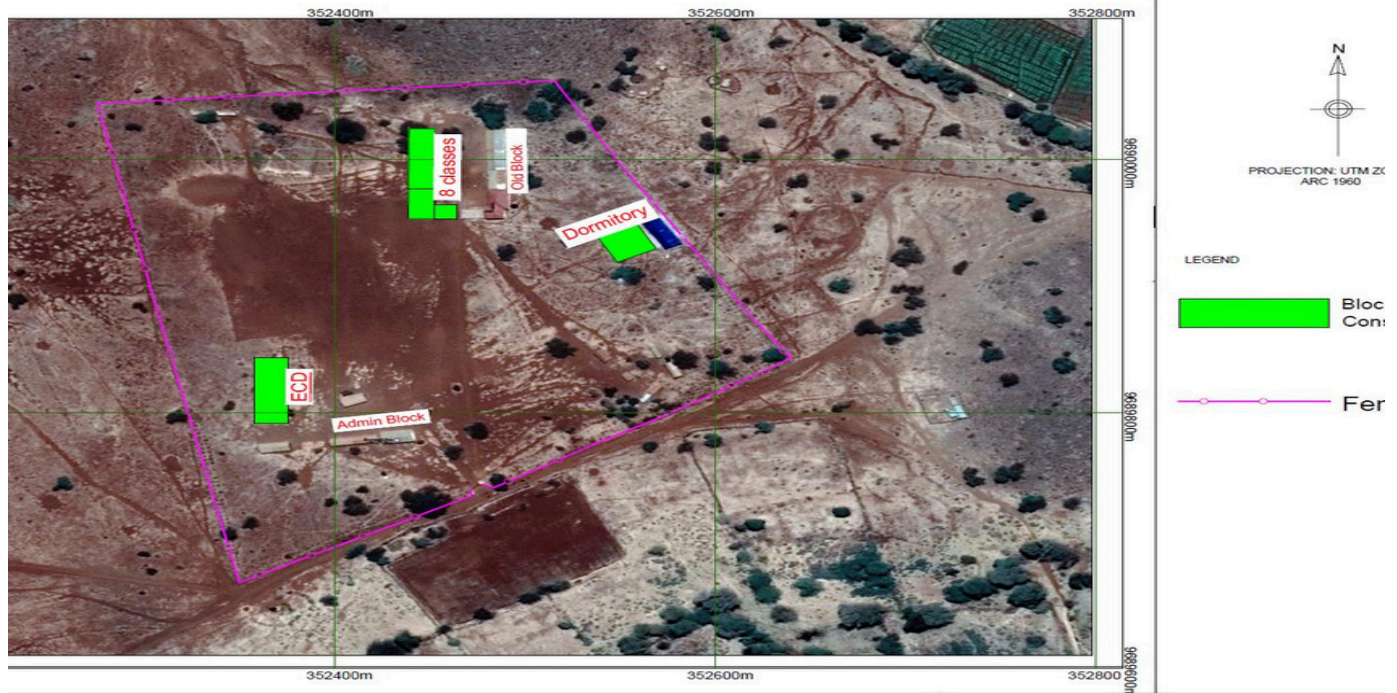
ChildFund®

## FINAL BINTI SHUJAA PROJECT REPORT AS AT 30<sup>TH</sup> NOVEMBER 2021

PROJECT INFORMATION	
<b>Project name</b>	BINTI SHUJAA
<b>Project country</b>	Kenya
<b>Location name &amp; number/community name</b>	Kajiado County, Loitokitok Sub-County, Kuku Ward, Emasasu Community, Elang'ata Enkima Primary School.
<b>Target &amp; Actual beneficiaries</b> (direct/indirect)	<p>Target 934 Primary students (458 girls, 476 boys).</p> <p>Actual Reached: 1,009 Elang'ata Enkima Primary students (496 girls and 513 boys)</p> <ul style="list-style-type: none"> <li>• 31 management board members (2 females, 11 males) and teachers (4 females, 14 males)</li> </ul> <p>Target: 1,200 parents (indirect beneficiaries)</p> <p>Actual Reached: 1300 parents (indirect beneficiaries).</p>
<b>Program duration</b> (total number months)	12 months.
	September 2020- November 2021
<b>Project Proposal Amount</b>	\$251,704
<b>Name &amp; Title of Person responsible</b>	Jeniffer Kavuti – Grants Acquisition and Management Manager
<b>Phone &amp; email of person responsible</b>	jkavuti@childfund.org
<b>Program description</b>	The 'Binti Shujaa Project' was developed in December 2019 in reference to the Maasai community practice of arranging marriages for girls and accepting a dowry payment for them. In the Maasai culture, girls enter arranged marriages when they are very young. Due to this, the program was given the name 'Binti Shujaa' (The Heroine) to support girls in accessing an education and to implement educational activities to directly benefit the girl child.

	<p>In Elang’ata Enkima Primary School, located in Emasasu Community (Kajiado County), there is poor infrastructure for the schools and children are forced to learn in inhospitable conditions. As a result, most are deprived of accessing quality education with some of them dropping out due to the poor learning environments and the long distances (7km-10km) they must trek daily to access basic education. Because of this, ChildFund Kenya will work to provide girls with the opportunity to be in school and perform better by constructing an additional girl’s dormitory in Elang’ata Enkima Primary school that will house up to 120 pupils and to construct an additional 10 classrooms for a safe learning environment that is conducive to learning for girls.</p>
<p><b>Project Scope</b></p>	<p>The project involved construction of 8 classrooms for upper primary students, 2 classrooms will be construct for Early Childhood Care and Development and construction and equipping of a 120-bed capacity girl’s dormitory in Elang’ata Enkima Primary School.</p>
<p><b>Project Goal:</b> To promote the well-being and the rights of girls by 2030 in Emasasu Community area.</p> <p><b>Project Objectives:</b></p> <ol style="list-style-type: none"> <li>1. Enhanced provision of inclusive and equitable quality education and learning opportunities for pupils at Elang’ata Enkima Primary School by January 2021.</li> <li>2. To enhance access to education (enrolment, retention, transition and completion) rates of girls in Elang’ata Enkima Primary School, by January 2021.</li> </ol>	

# Project Layout at Elang'ata Enkima Primary



CHILD FUND KENYA  
WESTLANDS-NAIROBI

SCHOOL LAYOUT		
DRAWING NAME: ELANGATA ENKIMA PRIMARY SCI		
No : B/S-1	Scale : AS SHOWN	Date: November 20:
Drawn By: V. Aduda		

## Project Kick off /Start up

The groundbreaking and site handover was done on 7<sup>th</sup> October 2020 and construction process completed by January 2021.

A project steering committee comprising of the ChildFund County office team (Programs, Finance and Grants team) and local implementing partner staff (Mt. Kilimanjaro Child Development Program). This team provided oversight of the project including monitoring visits to the project site.

The project steering committee start up meetings were done in September to plan for the project roll-out and internalize the project documents ahead of the implementation. Roles and responsibilities were assigned and every month, the team met to receive and review progress reports on project implementation and the financial reports (Budget vs. Actual).

## PROJECT COMMISSIONING

The project was commissioned on the 3<sup>rd</sup> of June 2021 by the then Country Director Kenya, Mr. Chege Ngugi and presided over by the Deputy Governor, Kajiado county Government. This came later after the project completion in January 2021 due to the Covid19 movement & gatherings restrictions that were imposed by the Government of Kenya to minimize the spread of the virus.



**ChildFund Country Director – Mr Chege Ngugi and Hon Martin Moshisho the Deputy Governor, Kajiado County commissioning the Girls Dormitory.**



Commissioning of the classroom block



Part of the front pictorial view of the 8No. Classroom block constructed



Rear pictorial view of the 8No. classroom block



Front view of the ECD Centre constructed



Pre-Primary 2 Learners at the newly constructed ECD Centre



120-bed capacity Girls' dormitory

## PARTNERS ENGAGEMENT DURING PROJECT IMPLEMENTATION

In this project ChildFund also partnered with key stakeholders as listed below:-

1. The County Government of Kajiado - Purchased mattresses for the girls dormitory, tables and chairs for the ECD BLOCK and also did fencing around the girl's dormitory.
2. Ministry of Public Works – supported in supervision and review and approval of the construction designs and building materials.
3. ChildFund's implementing partner for this project Mt. Kilimanjaro Child Development Programme further constructed a child-friendly pit latrine for the ECD learners.
4. Greening Oloitokitok – provided trees that were planted during the project commissioning ceremony.



Different stakeholders attended the project commissioning ceremony including: County Government officials (representatives from different ministries and departments such as Education, Health, Social services, Environment ), ChildFund staff, ChildFund Advisory Board, ChildFund Local implementing partners staff and board (MKCDP and EDCA), School community, Local Administration, Media representatives, Local leaders.

## IMPACT

Thanks to the Binti Shujaa project, the school enrollment and retention has improved. From the data below there is increase in enrolment for both the Pre-primary and upper primary classes.

	Student Enrolment Before Construction			Student Enrolment After Construction (as at November 2021)		
	Boys	Girls	Total	Boys	Girls	Total
<b>Pre-Primary 1</b>	25	21	46	33	26	59
<b>Pre-Primary 2</b>	23	20	43	30	33	63
<b>Primary</b>	<b>430</b>	<b>426</b>	<b>856</b>	<b>450</b>	<b>437</b>	<b>887</b>
<b>Retention</b>	All the 887 pupils enrolled in school this year are currently in school. No dropouts have been reported.					
<b>Completion</b>	The No of Class 8 students who were enrolled and completed the Kenya Certificate of Primary Education national exams is as follows:-					
	<b>Year 2019</b>			<b>Current Class 8 of year 2020 data;</b>		
	All 93 have been booked to sit for KCPE in March/April 2022.					
	<b>Boys</b>	<b>Girls</b>	<b>Total</b>	<b>Boys</b>	<b>Girls</b>	<b>Total</b>
	<b>39</b>	<b>41</b>	<b>80</b>	<b>50</b>	<b>43</b>	<b>93</b>
<b>Note: Due to Covid19 Pandemic, the schools' academic calendar was disrupted, and this is why the national exams will be done in March/April 2022. Before Covid 19, they were done in Nov/Dec every year.</b>						

School performance has improved based on the internal end term exams done this year and improved performance of the national/external examinations is expected to improve in the future because of the safe and enabling learning environment created by the construction of modern classes and dormitory.

The Kenya Certificate of Primary Education performance for the school for the last 2 years was as follows:

2019 Mean score = 256.41

2020 Mean score = 281.11

The newly constructed girl's dormitory currently has an enrolment of 46 girls which is a great increase from last year where we had only 25 girls. The awareness of the boarding facility is being done by the school management, local leaders and MKCDP – ChildFund's implementing Partner and it is expected that more girls will utilise the boarding facility. These are the girls who have been rescued from early marriages and female genital mutilation and are now less exposed to these retrogressive cultural practices.

Before the project, the Pre-Primary pupils were using dilapidated classrooms while some students were learning under the tree and now with the building of the ECD Block, the children are now in safe classes from which they can learn without unnecessary interruptions such as the strong wind, rain and risk of being bitten by the snakes.



My name is Teacher Susan from Elang'ata Enkima primary school, Am an ECDE Teacher. As a Teacher I want to thank ChildFund in partnership with MKCDP for constructing upper primary classrooms, ECDE Center and a Girl's Dormitory. This will help the pupils of this school since it will create a very conducive and safe learning environment. The dormitory will help our Girls from the cases of early pregnancies. The ECD Classes are Spacious to accommodate all our learners.



I am Stephen, Headteacher at Elangata Enkima Primary School. ChildFund has done a lot of work in this School and the community at large. They have constructed 10 classrooms, two of them being for ECDE learners, A Girls Dormitory with a 120 Bed capacity for the girls. This has



My name is Emanuel, a class seven pupil at Elangata Enkima primary school. I want to thank ChildFund and MKCDP for constructing new classrooms, ECDE classes and a dormitory. This will help us as pupils of this school since it has created a very good learning environment. The dormitory will help our sisters from the cases of early pregnancies.



My name is Christine from Elangata Enkima primary school, am in class Eight. I am one of the girls who is accommodated in the new Girls Dormitory constructed by ChildFund. This Dormitory has saved us from the long-distance travelling hassle and we are now able to attend to our classes on time. This will in turn reduce cases of early pregnancies since the boy – girl interaction is now not there. I want to thank ChildFund for the good work they have done in our school.



My name is Mr. David, Chief – Elang'ata Enkima Sub – location. ChildFund has done a very good work in this area. The 10 classrooms, two of them for ECDE, a Girls Dormitory and a Child friendly Pit Latrine for the ECD Learners are very big projects in our school. They have really changed not only the environment but also the school's image. Our pupils are now learning in spacious classes, the Girls are now accommodated in school hence there is a lot of learner's retentions in school. Cases of early pregnancies and school drop outs have reduced, and the school performance has improved.



## PROJECT MEDIA COVERAGE DURING COMMISSIONING

- 1) <https://www.standardmedia.co.ke/education/article/2001422672/how-dormitories-act-as-forts-against-harmful-practices>
- 2) <https://www.pd.co.ke/news/boarding-school-offers-refuge-for-teen-girls-93017/>
- 3) <https://www.kenyamoja.com/video/major-boost-child-fund-constructs-modern-girls-dormitory-elangata-enkima-kbc-video-485711>



## CONCLUSION

It is without a shed of doubt that the project has made tremendous impact in creating a conducive learning environment for the school going children and providing a haven for the girls threatened by early marriages and Female Genital Mutilation. This project has changed the face of the school, and the community as a whole and it will go a long way in changing the lives of the thousands of the pupils already enrolled in the school and more who will use the facility in many more years to come in future. The dignity of the children, teachers and parents in the school has also been improved.

## FURTHER SUPPORT NEEDED

However, there are still areas of support that would go a long way in improving the wellbeing of the children in school in aspects of Education, Health and Safety, Water Sanitation and Hygiene. This areas include: -

1. Toilets for the upper primary at Elang'ata Enkima Primary School
2. Renovation of the old dilapidated 9 classrooms at Elang'ata Enkima Primary School
3. Construct and equip kitchen facility at Elang'ata Enkima Primary School
4. Solar Panel Installation for the entire school since it is off grid
5. Equipping the 8 classes with 320 child friendly desks
6. Construction of 4 handwashing stations
7. Drilling & equipping of a borehole to provide access adequate, safe and clean water for the school.